



# Newsletter

8th May 2026

## Diary Dates

May

W/C 11<sup>th</sup> - KS2 SATs  
15<sup>th</sup> - Class photos  
18<sup>th</sup> - Year 1 phonics meeting with parents 3:30pm KSI Hall  
18<sup>th</sup> - Year 3 Egyptian Day  
19<sup>th</sup> - Year 5 Summer Showcase to parents  
19<sup>th</sup> - Last day of half term

June

1<sup>st</sup> - Return to school  
5<sup>th</sup> - Year 1 visits to the local library  
W/C 8<sup>th</sup> - Multiplication Tables Check  
W/C 8<sup>th</sup> - Phonics Screening Check  
8<sup>th</sup> - Yr 3-4 football match v Eversley(A) (selected children)  
9<sup>th</sup> - Year 3 trip to Call of the Wild  
15<sup>th</sup> - Year 2 trip to Hanningfield  
19<sup>th</sup> - Summer Enterprise \* & Inflatable Event 3:30-5pm  
23<sup>rd</sup> - KSI Music Festival at Lincewood (Selected children)  
25<sup>th</sup> - Pupil Voice @ St Mary's (Head boy & girl)  
W/C 29<sup>th</sup> - Sports Days

Inset Dates— 20<sup>th</sup>, 21<sup>st</sup> & 22<sup>nd</sup> May 2026

As we edge closer to the summer, it really does feel like the warmer weather is finally making an appearance – and our children have been making the most of it.

This week, our pupils have thoroughly enjoyed spending more time outside. It's been brilliant to see teachers incorporating outdoor learning into their lessons, with children reading under the trees, exploring nature, and taking their learning beyond the four walls of the classroom. The outdoors helps us build on learning done indoors and it's wonderful to see this in action across the school.

Next week marks an important milestone as Year 6 children across the country sit their end of Key Stage 2 SATs. While we absolutely encourage our Year 6s to try their best and show what they know, I want to be clear: their time in primary school is not defined by one week of tests.

I am going to finish this week with a note to our amazing Year 6 children:

You've worked so hard this year, and you've shown amazing determination, resilience and growth. Next week's assessments are simply a chance for you to show what you know – they're not a measure of who you are or what you're capable of achieving in life. SATs are just a small part of your primary school journey. What matters most is the kind, thoughtful, curious learners you've become. You've already achieved so much, and you have bright futures ahead of you. You've got this – and we're incredibly proud of you all.

Wishing you all a wonderful weekend.

Mr Wade  
Head of School



## Talk it Topic

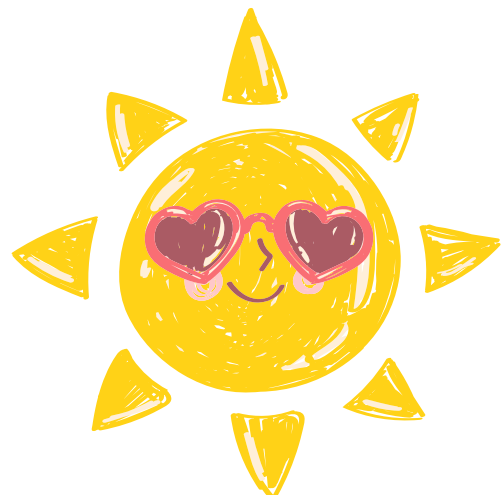
'Talk it' topics are an opportunity for children to discuss an issue or idea throughout the week which is linked to British Values. It encourages children's communication skills as well as debating skills and is fun. We cover a different topic in school each week. It would be fantastic if you could talk about it at home too.

The coming week's topic is:

EYFS - When do we make decisions?

KS1/KS2 - How can music bring people together?

The topics are linked to one of the following British Values: Individual Liberty, Rule of Law, Democracy or Mutual Respect & Tolerance



# Well done to the following children

## Certificate of Achievement

Buttercup -  
Daffodil - Mason S  
Primrose - Clara  
Bluebell - Rosie-Mae B-T  
Rose - Ayrach  
Tulip - Lexi  
Lavender - Maxim  
Orchid - Mirabelle  
Sunflower - Lucia K  
Birch - Jensen J  
Hawthorn - Phoebe V  
Pine - Buddy M  
Ash - Rebecca V  
Beech - Layla-Anne D  
Maple - Louie M  
Olive - Mishal A  
Sycamore - Teddy S  
Willow - Faida E  
Elder - Owen D  
Elm - Dharan R  
Oak - Danny S

## Reader of the Week

Bluebell - Gray W  
Rose - Josie  
Tulip - Jaxon  
Lavender - Florence  
Orchid - David  
Sunflower - Cheyenne H  
Birch - Riley P  
Hawthorn - Harry D  
Pine - Aairah L  
Ash - Eva P  
Beech - Oscar M  
Maple - Maddie R  
Olive - Freya P  
Sycamore - Charlie H  
Willow - Ann M  
Elder - Faiqoh K  
Elm - Noah P  
Oak - Adrian



#### School Crossing Patrol Service

Could pedestrians please remain on the safety of the kerbs until the patrol is in the middle of the road. Some vehicles do not stop when requested to do so by the patrol, so it is much safer to wait until the patrol has established their position in the middle of the road and advised you it is safe to cross before pedestrians leave the kerbs. Thank you.

## Berlesduna Vacancies



### BERLESDUNA ACADEMY TRUST – VACANCIES

- BERLESDUNA – COMPLEX NEEDS & SEND TEACHER closing date 14<sup>th</sup> May
- BERLESDUNA – GOVERNOR/TRUSTEE closing date 22<sup>nd</sup> May
- CRAYS HILL – CLASS TEACHER closing date 15<sup>th</sup> May
- FELMORE – CLASS TEACHER closing date 18<sup>th</sup> May
- MERRYLANDS – HLTA closing date 10<sup>th</sup> May
- MERRYLANDS – PART TIME EYFS TEACHER closing date 10<sup>th</sup> May
- MERRYLANDS – AUTISM SUPPORT CENTRE LEAD TEACHER closing date 13<sup>th</sup> May

For more information and to apply for any of these exciting opportunities, please follow the link to our website [Vacancies - Berlesduna Academy Trust](#)



# Reading Corner

This week, we will be reading....

Nursery - The sunflower sword by Mark Sperring and Miriam Latimer

Reception - The Tiny Seed

Year 1 - Little Red

Year 2 - The Day the Crayons Quit

Year 3 - The Pied Piper of Hamelin

Year 4 - Tamarind and the Star of Ishta

Year 5 - King Kong

Year 6 - Darwin's On The Origin of Species

# Recommended Reads

KS1	Lower KS2	Upper KS2
		



# Phonics

We're teaching every child to read with Little Wandle Letters and Sounds Revised  
A complete SSP validated by the Department for Education



Please scan the QR code or click the link to take you to the Little Wandle Parents page where you will find how we teach a new sound, how we teach children to read decodable words and tricky words. You will also find how to pronounce all GPCS your children learn.

<https://www.littlewandlelettersandsounds.org.uk/resources/for-parents/>



Reception	This week in phonics, Reception focus has been 'Phase 4 longer words, and compound words'. We have been learning new phase 4 tricky words- there, when, what, one.
Year 1	This week we have been revising the phase 5 graphemes and tricky words
Year 2	Our focus this week is - Why do some words end -le, -al, -il or -el? Plus, we have been looking at the homophones - to/too/two. Please practise the new, weekly spellings. The children shall be tested on these on Friday 15th May. Thank you for your continued support. Year 2 team.

## KS2 Class of the week - Maple Class - 97%

Player of the week—

Lavender— Nisla

Orchid — Amelia

Sunflower— Iremide O

Birch— Ibrahim M

Hawthorn— Ollie N

Pine— Ralph C

Ash— Jeremiah W-B

Beech— Chidiebube E

Maple— Caleb S

Olive - Ella M

Sycamore - Imogen L

Willow— Aliana W

Elder— Bella-Rose E

Elm - Mixhael Z

Oak— Darius



## KS1 Class of the week - Rose Class - 19%



Player of the week—

Bluebell— Iustina R

Rose— William

Tulip— Camelia



# Oracy Corner



## Let's Talk



Should children choose their own bedtime?

 **Build**  
Develop, add to or elaborate on an idea.

**Start by saying:**

- Building on X's idea...
- I agree and would like to add...
- X's idea made me think...

**Build**

 **Challenge**  
Disagree or present an alternative argument

**Start by saying:**

- I disagree because...
- To challenge you X, I think...
- I understand your point of view, but have you thought about...?

**Challenge**



# SEND Roadshows

The Essex Local Offer SEND Roadshows are back for the summer term!

The roadshows are a series of in-person information events for parents and carers of children and young people with Special Educational Needs and Disabilities (SEND).

During the events, you can speak with different SEND professionals under one roof. This includes representatives from local support groups, education professionals, health teams, and social care teams.

You can drop in to an event when it's convenient for you, without booking and:

- access support and information



All the events run from 9.30 until 12.30pm. The next roadshow dates and locations are:

Date/time

Venue

South Essex SEND Local Offer Roadshow – Monday 15 June

The Mill Arts and Events centre, Mill Hall, Bellingham Lane, Rayleigh, SS6 7ED

Mid Essex SEND Local Offer Roadshow – Wednesday 17 June

Silver End Village Hall, 3 Broadway, Silver End, Witham, CM8 3RQ

North East Essex SEND Local Offer Roadshow – Monday 22 June

Venture Centre, 2000 Bromley Rd, Lawford, Manningtree, C011 2JE

West Essex SEND Local Offer Roadshow - Wednesday 1 July

Foakes Hall, 47 Stortford Road, Great Dunmow, CM6 1DG

For anyone who prefers a less busy environment, events are usually quieter after 11.30am. If you want to find out more about the roadshows and who you can come along and speak to please visit <https://send.essex.gov.uk/i-think-my-child-needs-help/essex-send-local-offer-roadshows>

We look forward to welcoming those of you who can come along.

Warm regards  
The SEND Navigation Team

# Reception trip to Barleylands

Reception enjoyed a lovely day at Barleylands Farm on Friday! We became farmers and had a fun packed day of cooking, feeding the animals and riding a tractor. We learnt about all the healthy foods the hungry caterpillar ate and then we made our own rainbow salad. We used a knife to cut, chop, rip and snip a wide variety of fruits and vegetables to make our salad, which the children took home to eat. We enjoyed a knowledge-filled guided tour around the farm and had the opportunity to feed goats and sheep. We also saw pigs, guinea pigs, cows and horses and watched the Birds of Prey show. The highlight of many of the children's day was the tractor ride. What a bumpy ride it was!



# do you know the signs of type 1 diabetes?



We call them the **4Ts**. If you or your child are weeing more often, constantly thirsty, more tired than usual, or losing weight for no reason, it could be a symptom of type 1 diabetes. If left undiagnosed, type 1 diabetes can be fatal. **If you're experiencing any of the 4Ts, ask your doctor for a test immediately.**



**Scan the QR code or visit [diabetes.org.uk/the4Ts](https://diabetes.org.uk/the4Ts)**